



Antoine Guisan



A. Guisan's team at the University of Lausanne  
Picture taken in winter 2009

From left to right:

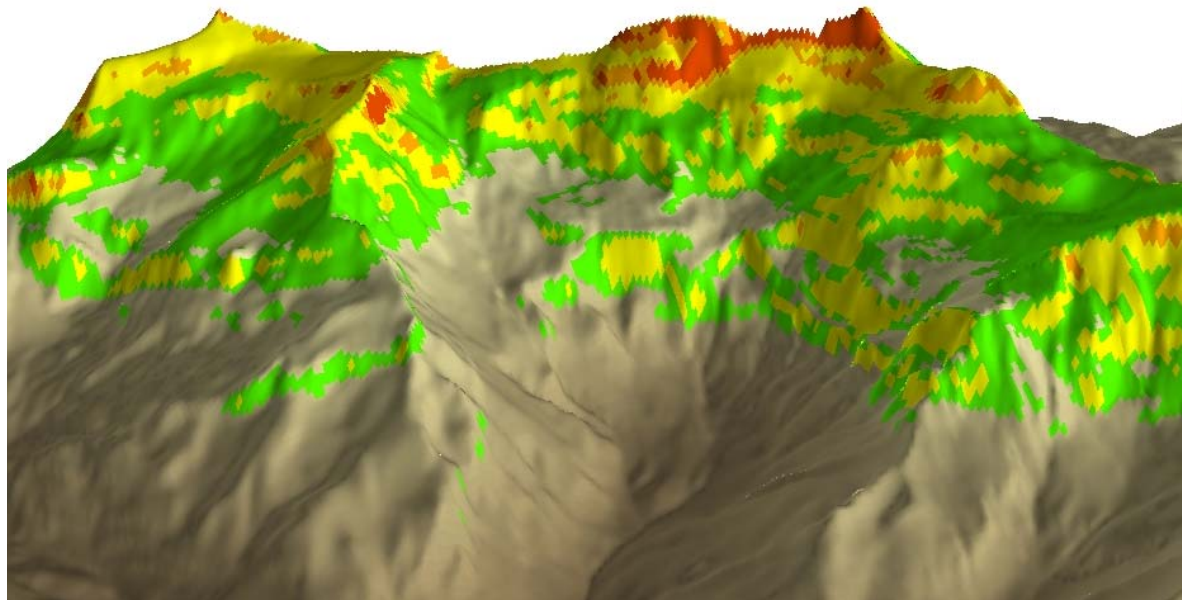
Anne Dubuis, John Dwyer (visiting), Angela Lomba (visiting), Julien Pottier, Pascal Vittoz, Robin Engler, Gwenaelle Le Lay, Blaise Petitpierre, Antoine Guisan, Loic Pellissier, Dorothea Pio, Luigi Maiorano, Benjamin Isambert (visiting), Patricio Plissock



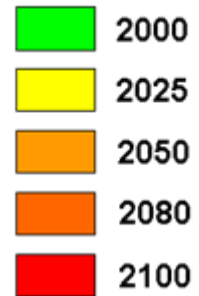
Part of the study area in the Western Swiss Alps  
(massif de la Pierreuse taken from Château d'Oex)



*Saxifraga  
oppositifolia*



Potential distribution



**Diablerets Massif** - Distribution of *Saxifraga oppositifolia*  
current climate versus HadCM3 A1F1 2080 scenario

Picture and graph:  
courtesy of Dr.  
Christophe Randin

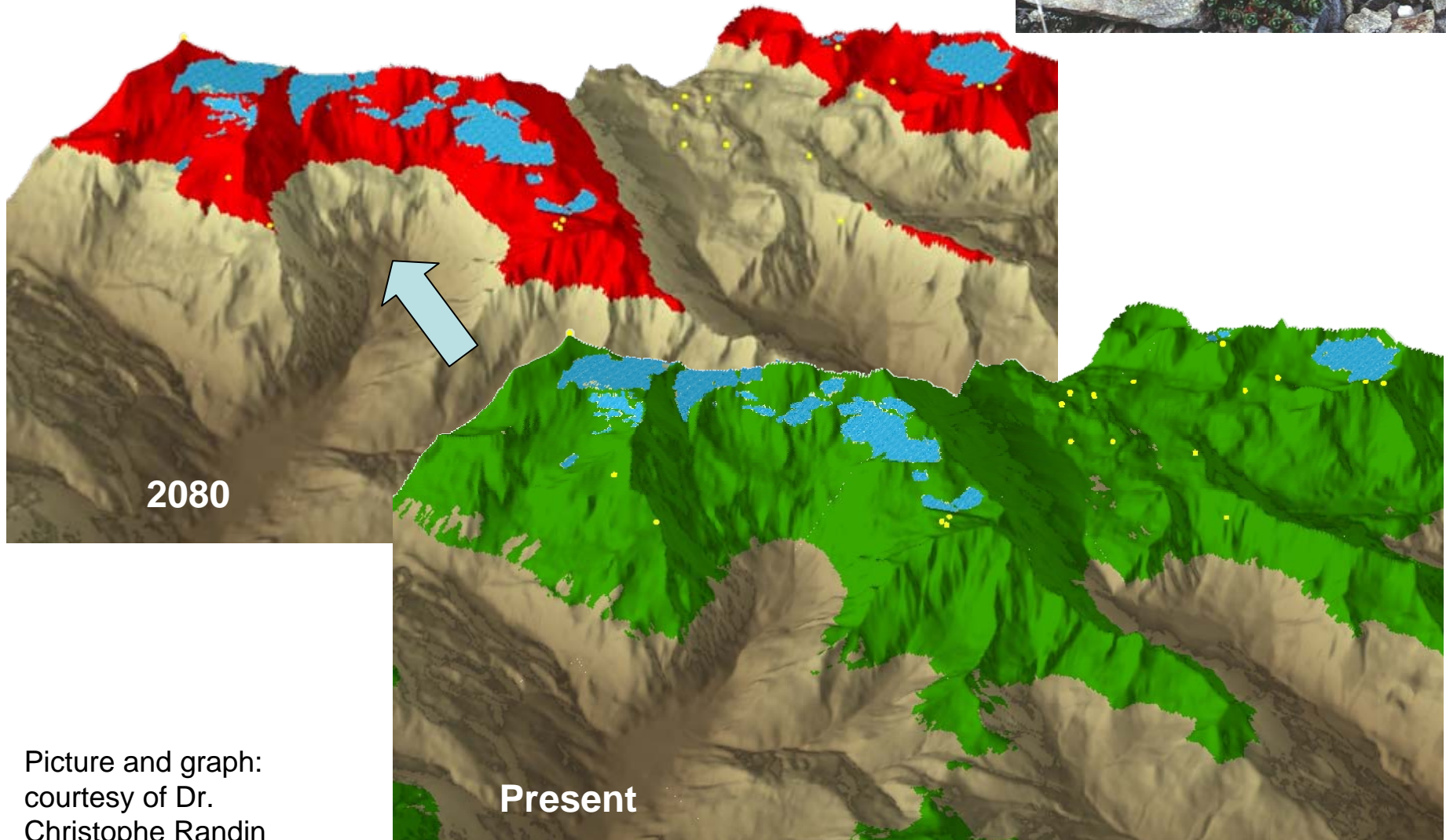


## Diablerets Massif

Distribution of *Saxifraga oppositifolia*

current climate (green) versus

HadCM3 A1F1 2080 scenario (red)



Picture and graph:  
courtesy of Dr.  
Christophe Randin